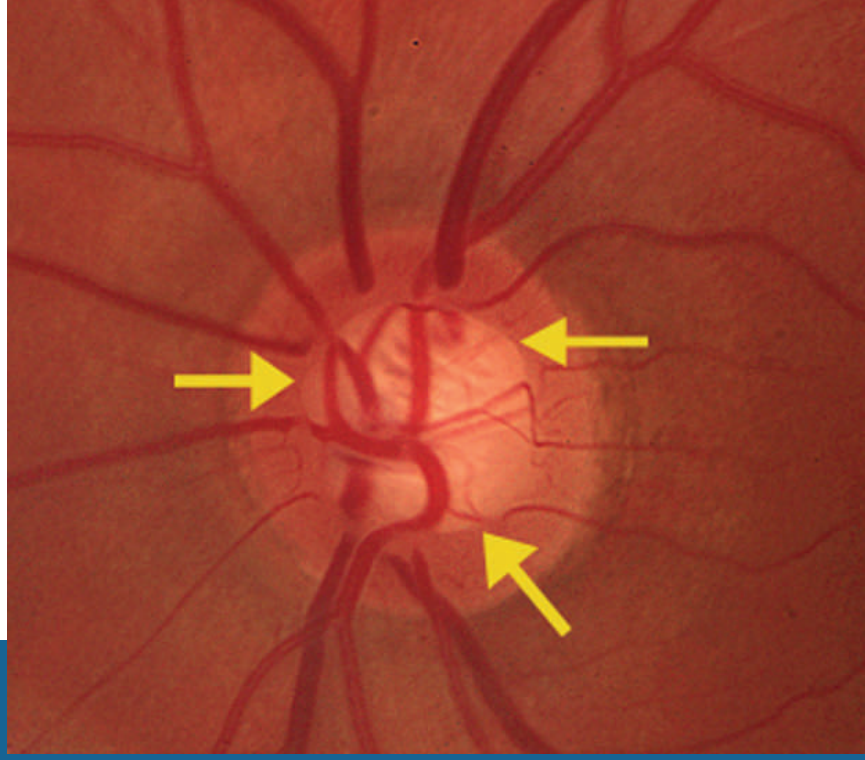




OPTIMED



[Platinum Sponsors]



The RVEEH / La Trobe University
Clinical School of Orthoptics Proudly Presents the

Optimed & Device Technologies Orthoptic Continuing Education Seminar Series

Seminar 2

The Optic Nerve in Glaucoma: What is Abnormal? Dr Catherine Green

GIRU / Glaucoma Monitoring Clinic Consultant
Royal Victorian Eye and Ear Hospital



[Gold Sponsors]



[Silver Sponsor]

Mon 11.5.09

Lucy Jones Hall
Royal Victorian Eye & Ear Hospital

Time: 5:45pm
Refreshments provided

RSVP
Robyn.Wallace@eyeandear.org.au

