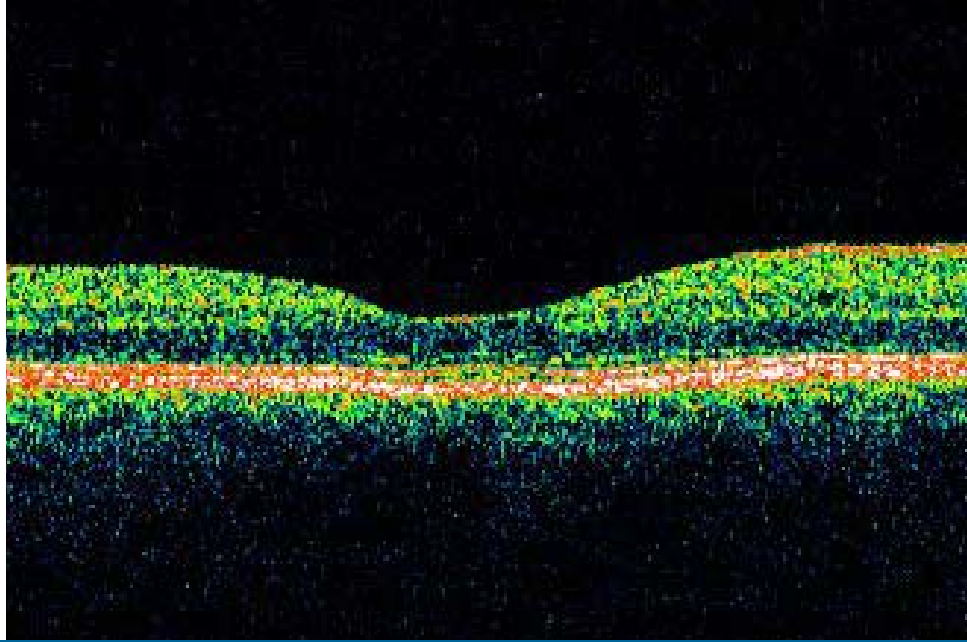




[Platinum Sponsor]



The RVEEH / La Trobe University Clinical School of Orthoptics Proudly Presents the

Optimed Orthoptic Continuing Education Seminar Series

Seminar 5

Tracking glaucoma progression using OCT and the Humphrey Field Analyser

Matthew Wensor

Carl Zeiss Australia



[Silver Sponsors]

Mon 21.6.10

Lucy Jones Hall
Royal Victorian Eye & Ear Hospital

Time: 5:30pm
Refreshments 5:30pm. Presentation 6pm

RSVP: 14 June 2010
Catherine.mancuso@eyeandear.org.au

